



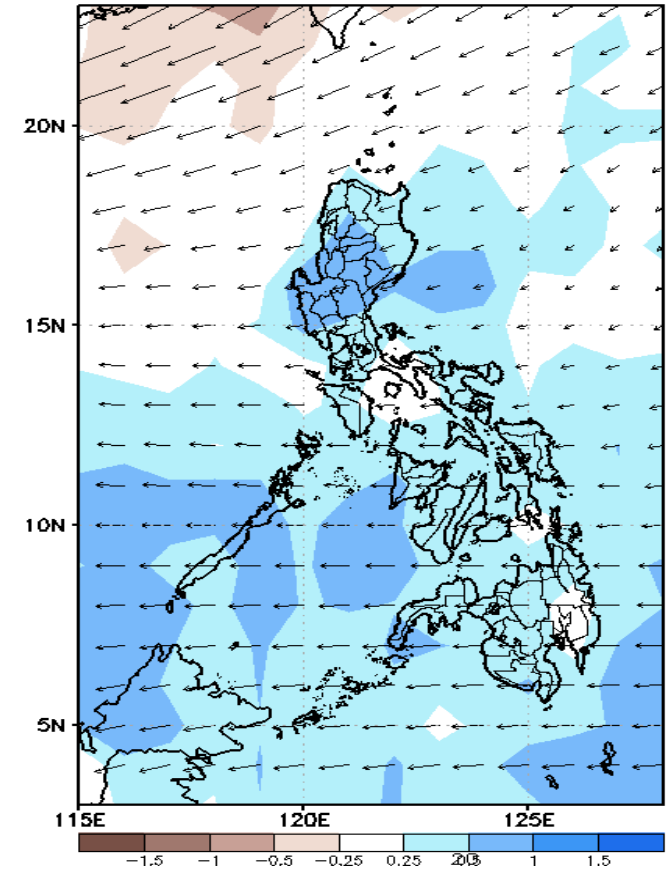
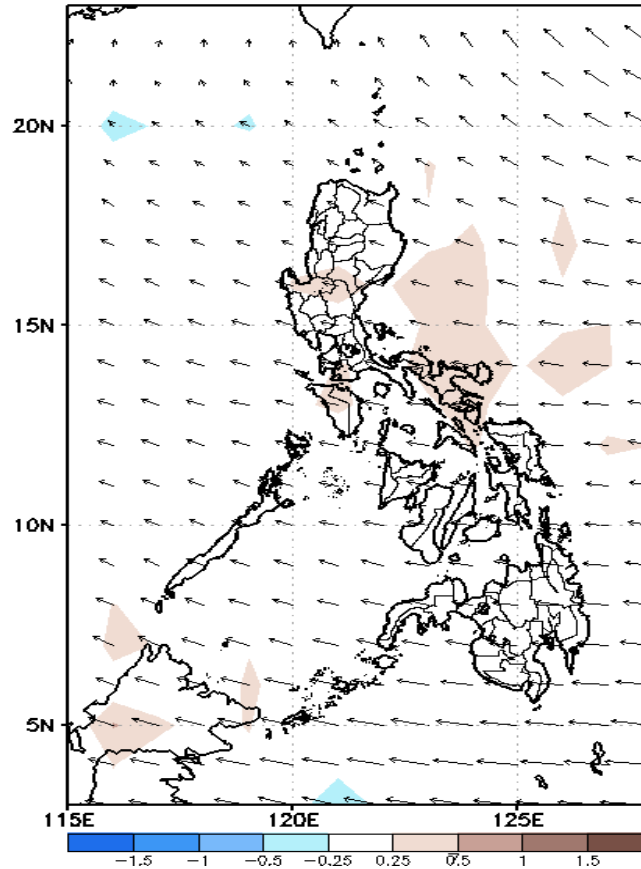
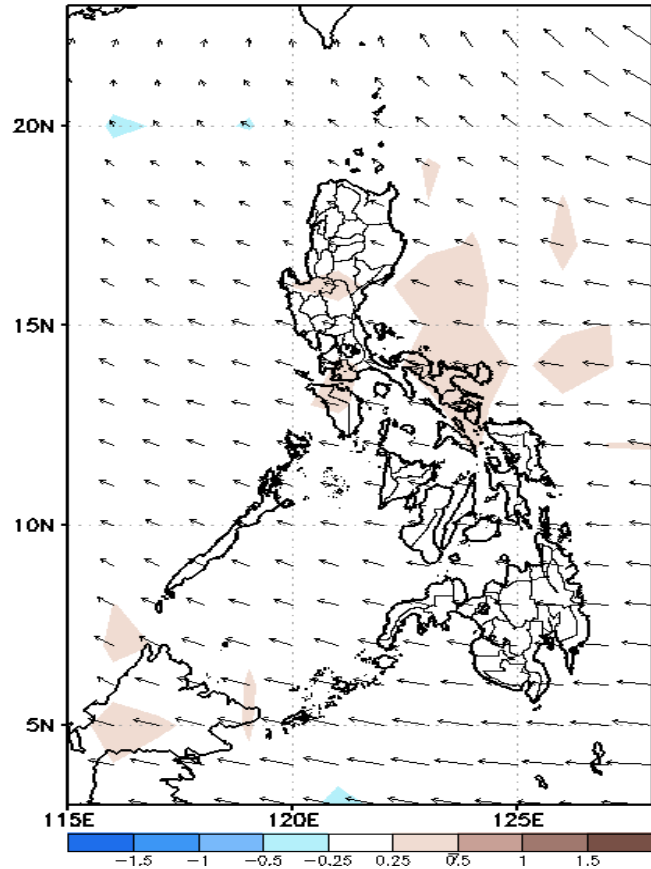
Week 1 & Week 2 Forecast for the Philippines using GEFS Model



GEFS Week-1 Forecasts: Divergence & Wind Anomaly

Week 1: Aug 19-25, 2021

GEFS Week-1 850-hPa Divergence and Wind Anom
Valid: 20210819 - 20210825
GEFS Week-1 700-hPa Divergence and Wind Anom
Valid: 20210819 - 20210825
GEFS Week-1 200-hPa Divergence and Wind Anom
Valid: 20210819 - 20210825

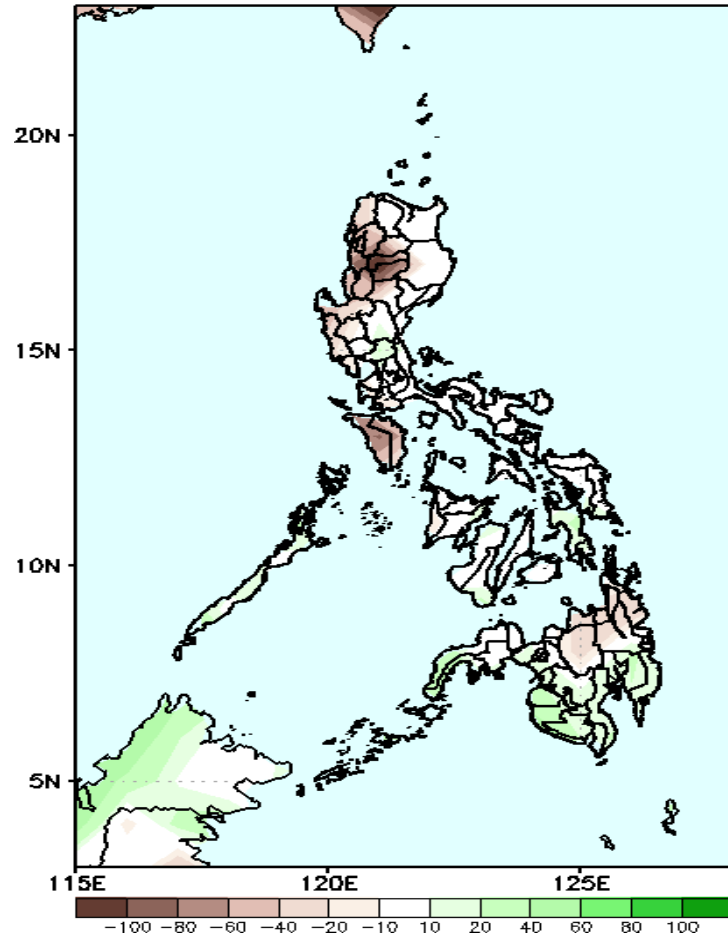


Upper and low level Divergence suggest likelihood of light precipitation in most parts of the country. Southwest Monsoon affecting some parts of Western Luzon and Visayas while Easterlies affecting most parts of the country. Attributing to light to moderate rains due to thunderstorms during the forecast period.

Precipitation Anomaly and Exceedance Probability > 25/50 mm

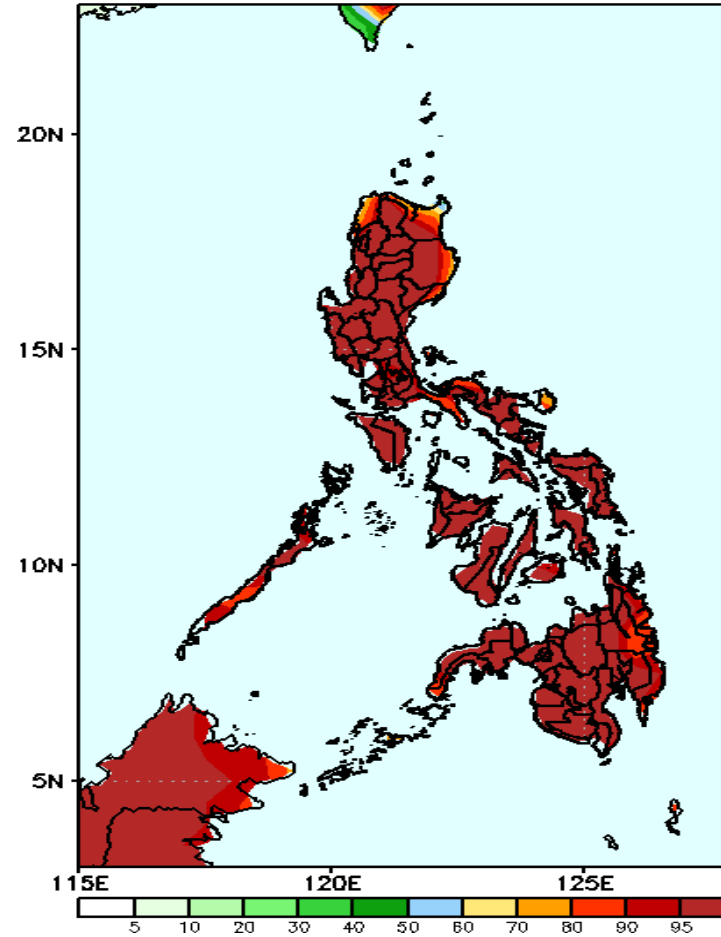
Week 1: Aug 19-25, 2021

GEFS Week-1 Precip Anomaly
Valid: 20210819 - 20210825



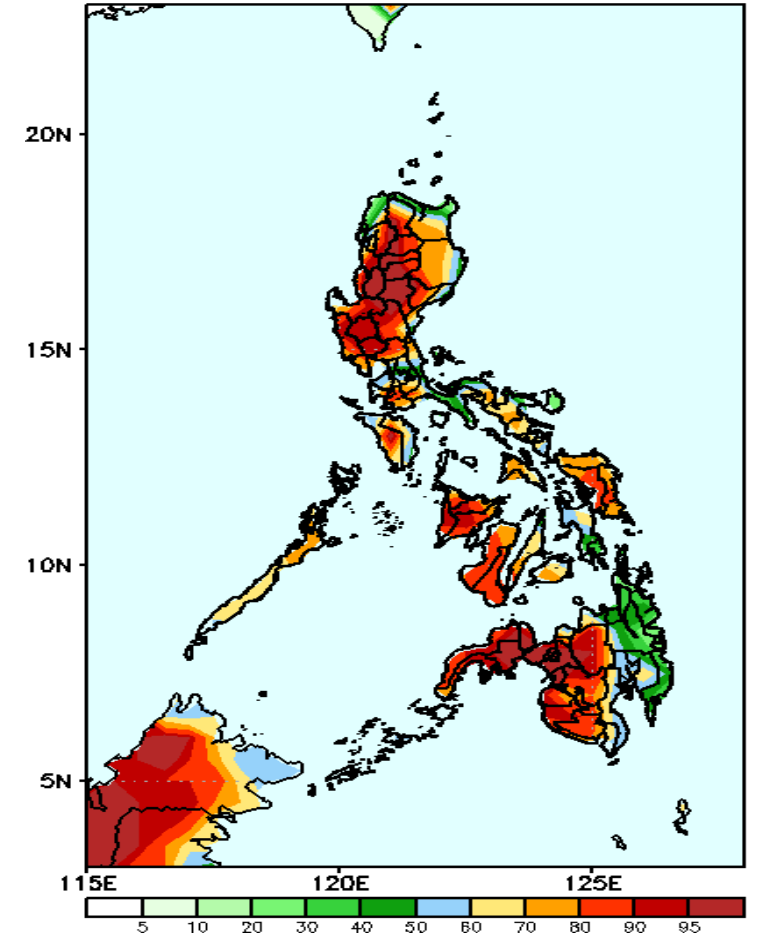
Rainfall deficit of 40-100mm is expected in most parts of Ilocos & Cordillera Region and Mindoro during the forecast period.

GEFS Week-1 Exceedance Prob. > 25mm
Valid: 20210819 - 20210825



High probability of rainfall to exceed 25mm in most parts of the country is expected during the forecast period.

GEFS Week-1 Exceedance Prob. > 50mm
Valid: 20210819 - 20210825

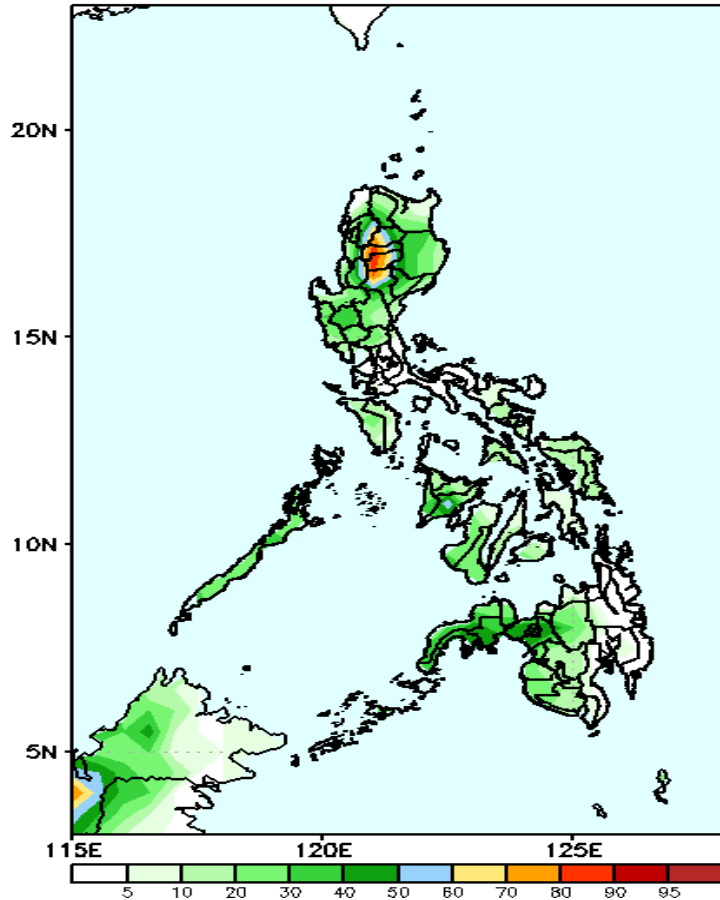


High probability of rainfall to exceed 50mm in most parts of the country is expected except in the eastern part of Mindanao during the forecast period.

Exceedance Probability > 100/150/200 mm

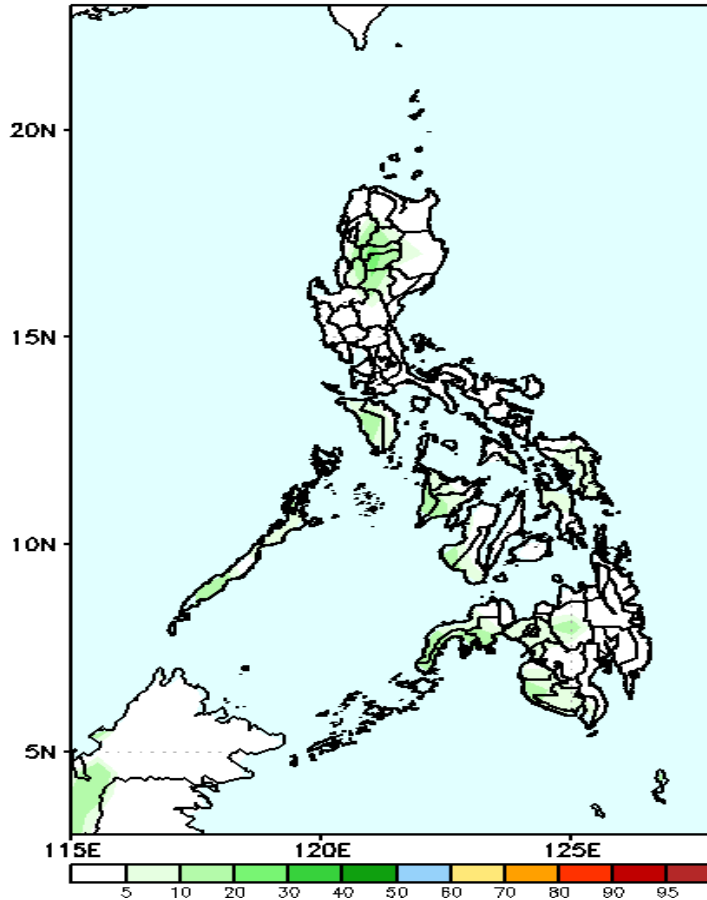
Week 1: Aug 19-25, 2021

GEFS Week-1 Exceedance Prob. > 100mm
Valid: 20210819 - 20210825



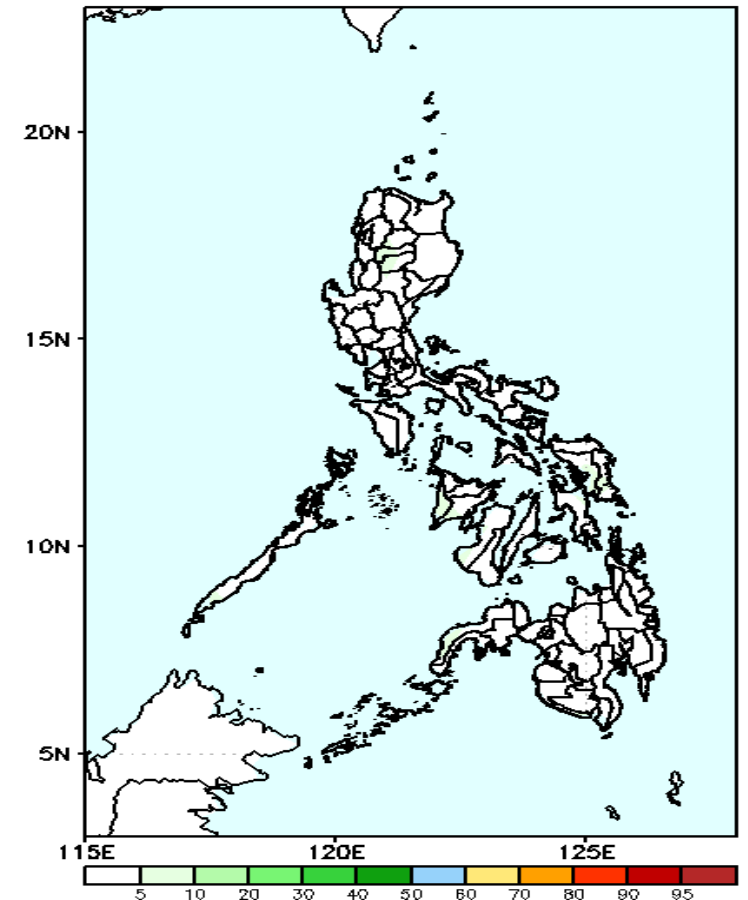
40-90% probability of rainfall to exceed 100mm in Cordillera Region while less likely for the rest of the country.

GEFS Week-1 Exceedance Prob. > 150mm
Valid: 20210819 - 20210825



Less probability of rainfall to exceed 150mm in most parts of the country is expected during the forecast period.

GEFS Week-1 Exceedance Prob. > 200mm
Valid: 20210819 - 20210825

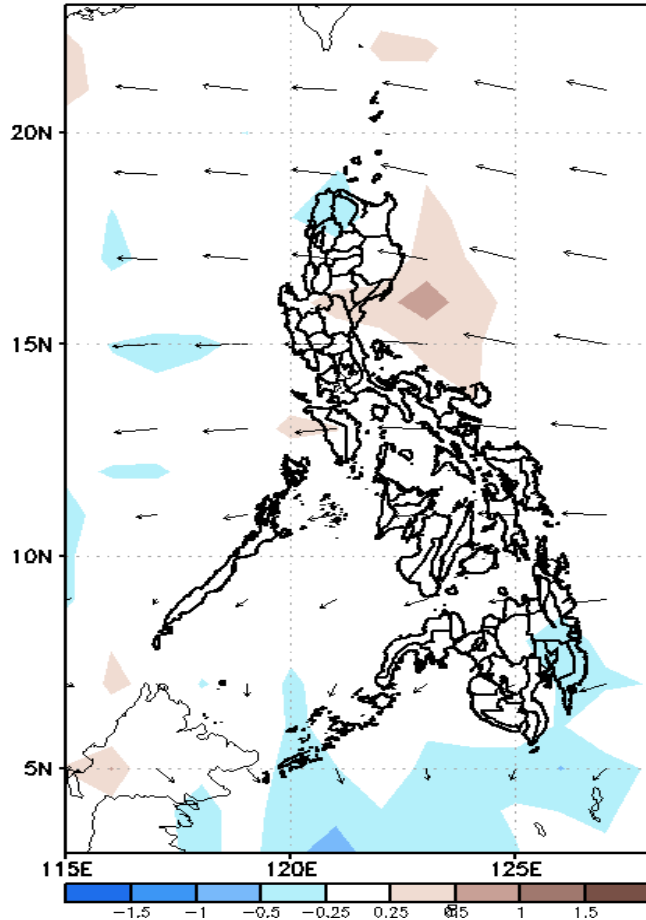


Less probability of rainfall to exceed 200mm in most parts of the country is expected during the forecast period.

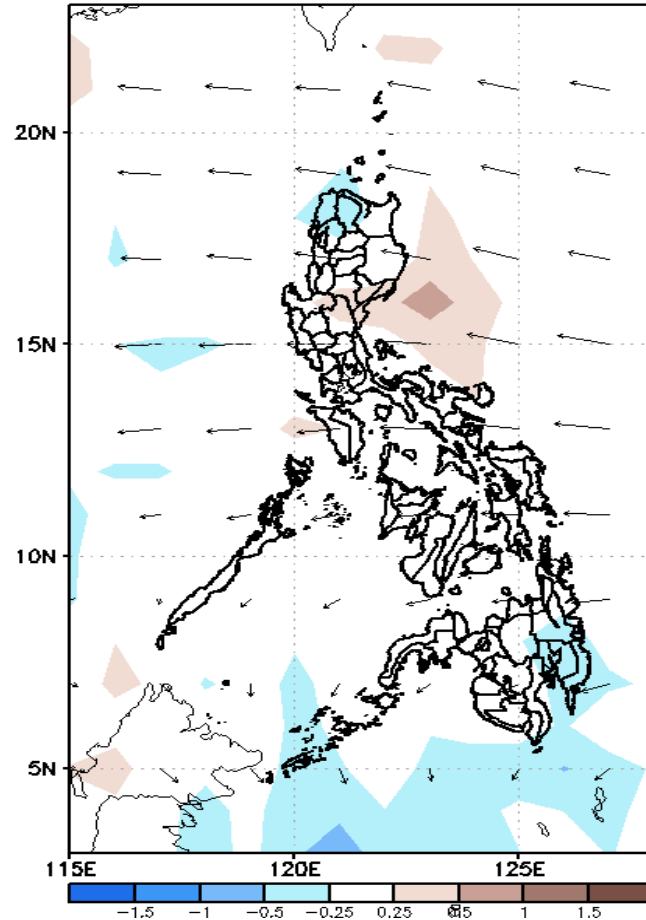
GEFS Week-2 Forecasts: Divergence & Wind Anomaly

Week 2: Aug 26-Sep 01, 2021

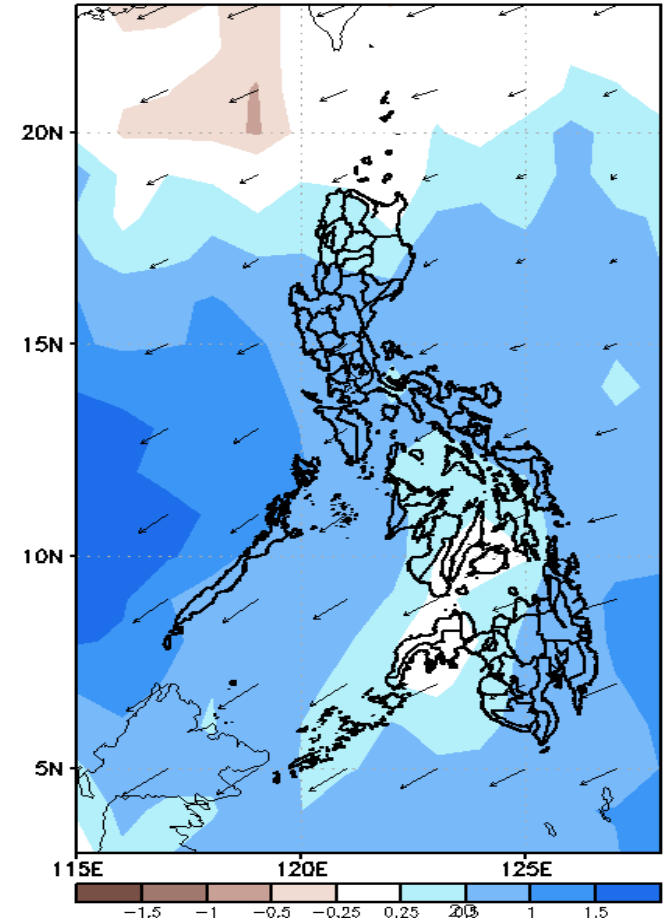
GEFS Week-2 850-hPa Divergence and Wind Anom
Valid: 20210826 - 20210901



GEFS Week-2 700-hPa Divergence and Wind Anom
Valid: 20210826 - 20210901



GEFS week-2 200-hPa Divergence and Wind Anom
Valid: 20210826 - 20210901

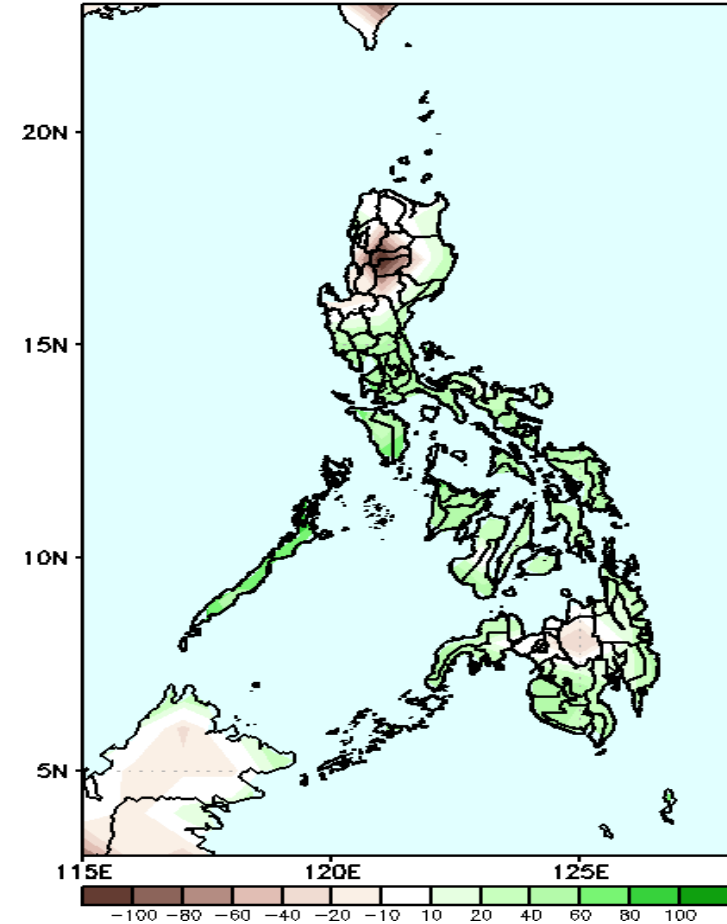


Upper and low level Divergence suggest likelihood of precipitation most parts of the country. Southwest monsoon affecting some parts of the Western Luzon and Visayas. Southwest Monsoon affecting Western Luzon and Visayas while Easterlies affecting most parts of the country. Attributing to light to moderate rains due to thunderstorms during the forecast period.

Precipitation Anomaly and Exceedance Probability > 25/50 mm

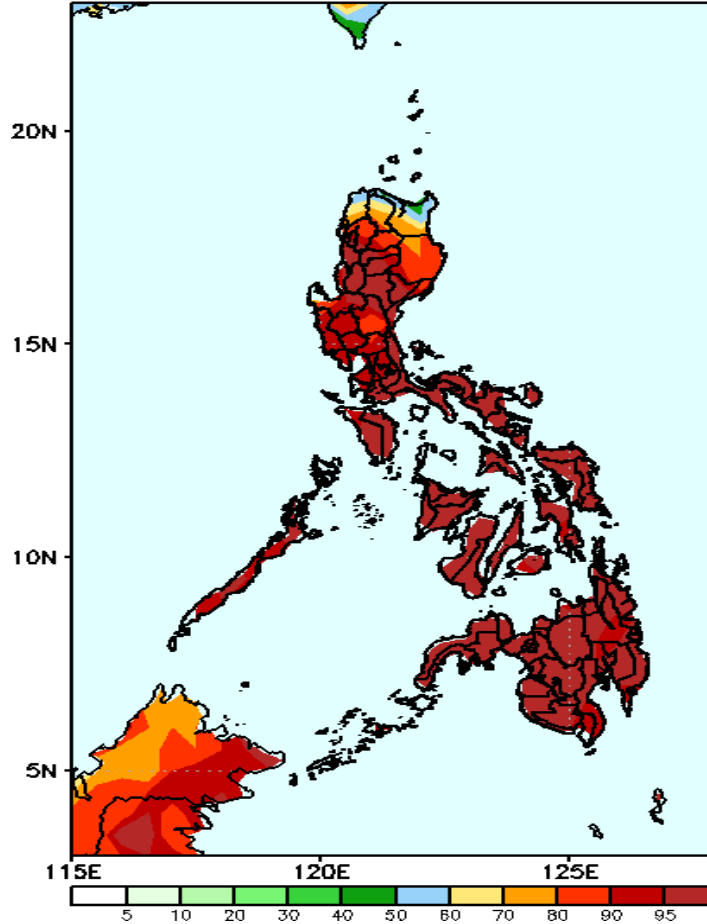
Week 2: Aug 26-Sep 01, 2021

GEFS Week-2 Precip Anomaly
Valid: 20210826 - 20210901



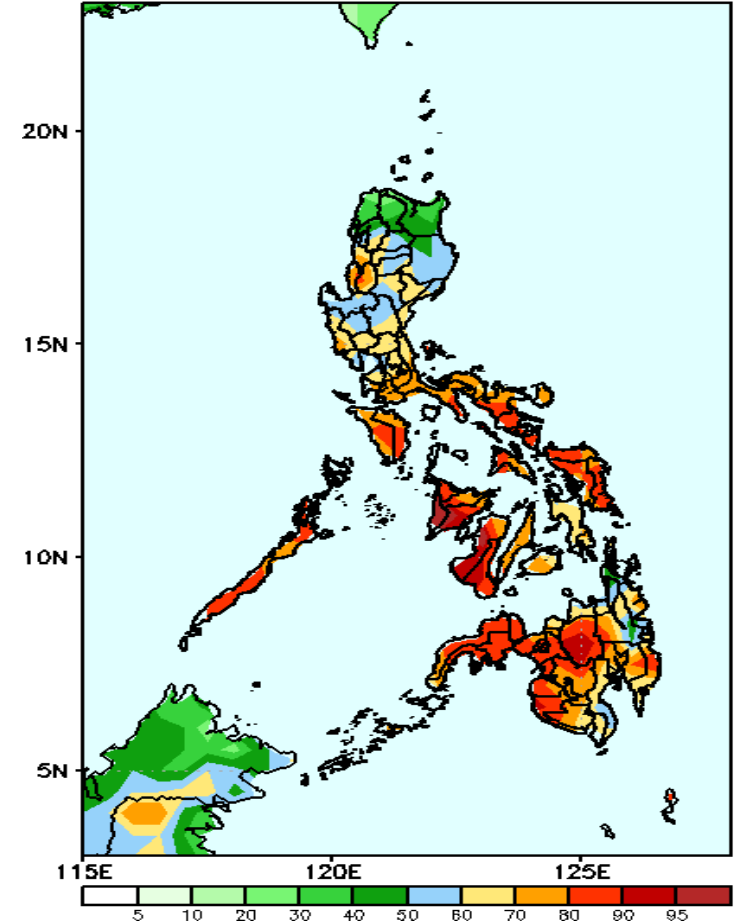
Increase of rainfall of 40-80mm is expected in most parts of the country except in Cordillera Region where there is 40-80mm rainfall deficit during the forecast period.

GEFS Week-2 Exceedance Prob. > 25mm
Valid: 20210826 - 20210901



High probability of rainfall to exceed 25mm in most parts of the country is expected during the forecast period

GEFS Week-2 Exceedance Prob. > 50mm
Valid: 20210826 - 20210901



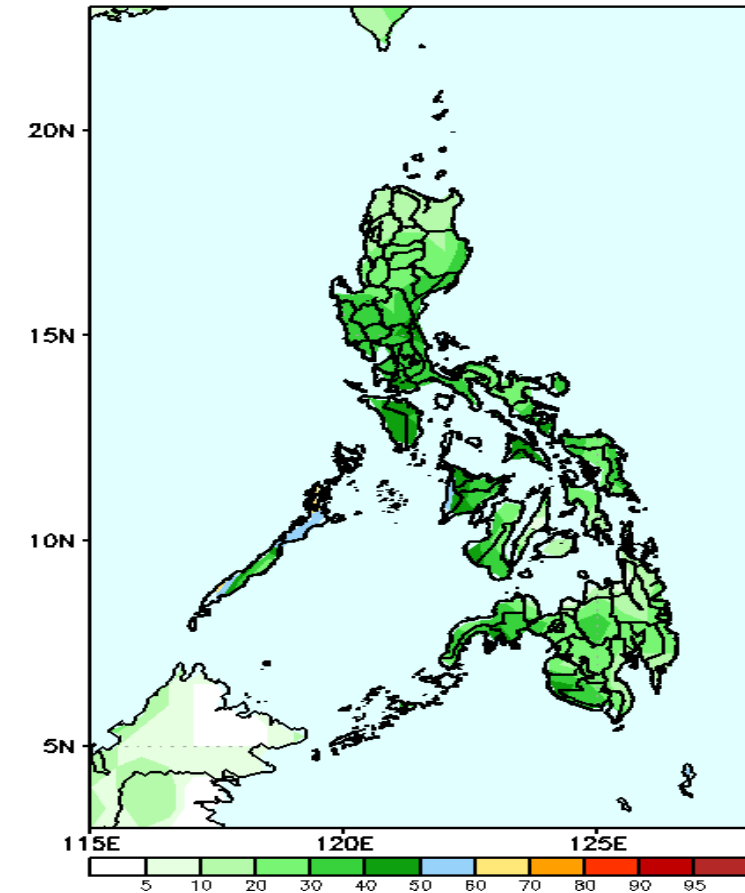
High probability of rainfall to exceed 50mm in most parts of the country except in the provinces of Ilocos Norte, Apayao and Cagayan during the forecast period.



Exceedance Probability > 100/150/200 mm

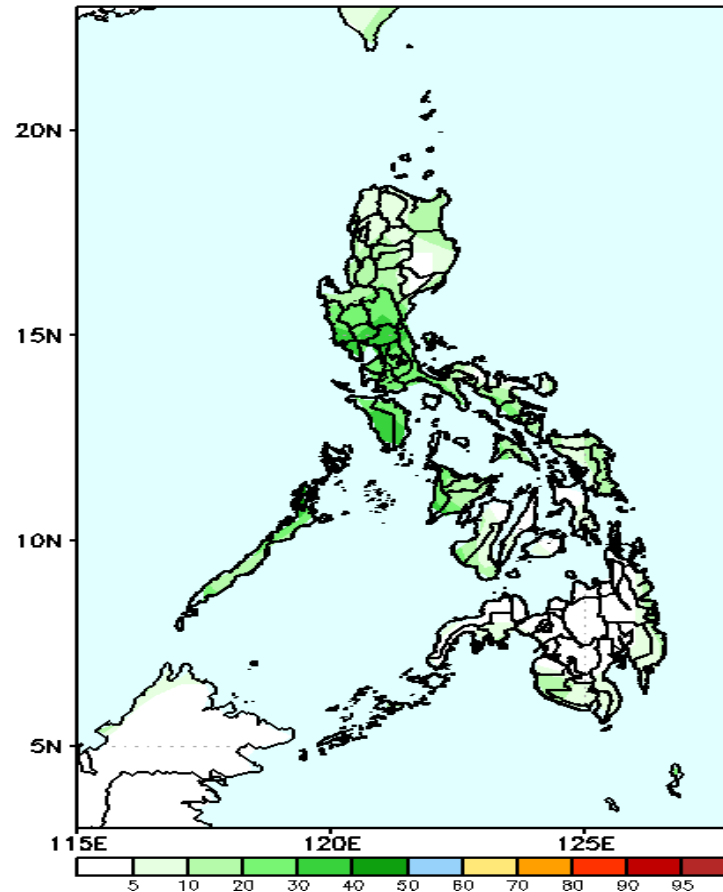
Week 2: Aug 26-Sep 01, 2021

GEFS Week-2 Exceedance Prob. > 100mm
Valid: 20210826 - 20210901



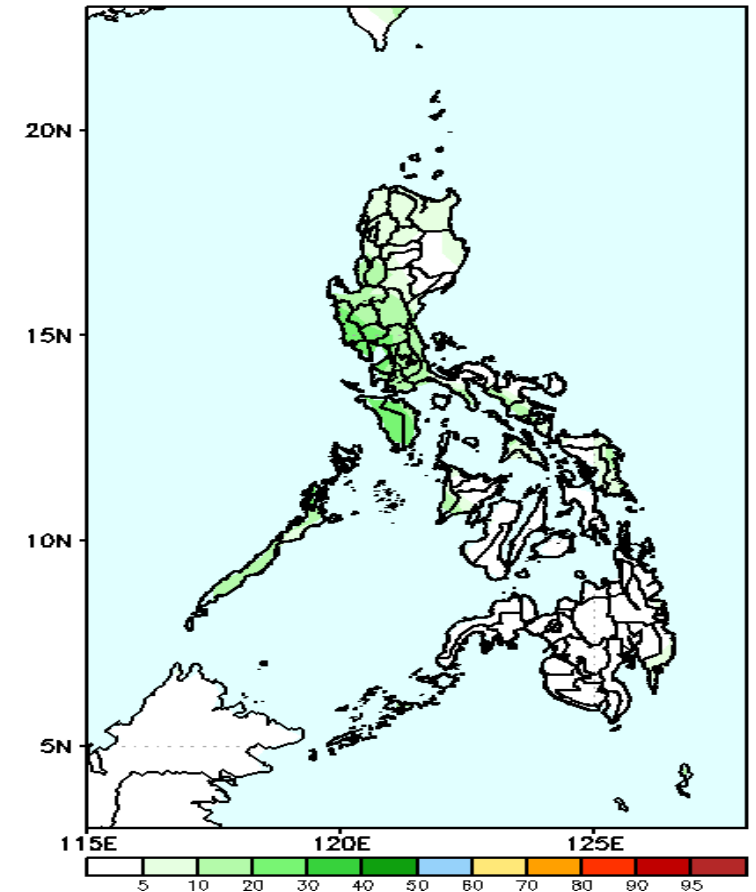
Less probability of rainfall to exceed 100mm in most parts of the country is expected during the forecast period.

GEFS Week-2 Exceedance Prob. > 150mm
Valid: 20210826 - 20210901



Less probability of rainfall to exceed 150mm in most parts of the country is expected during the forecast period.

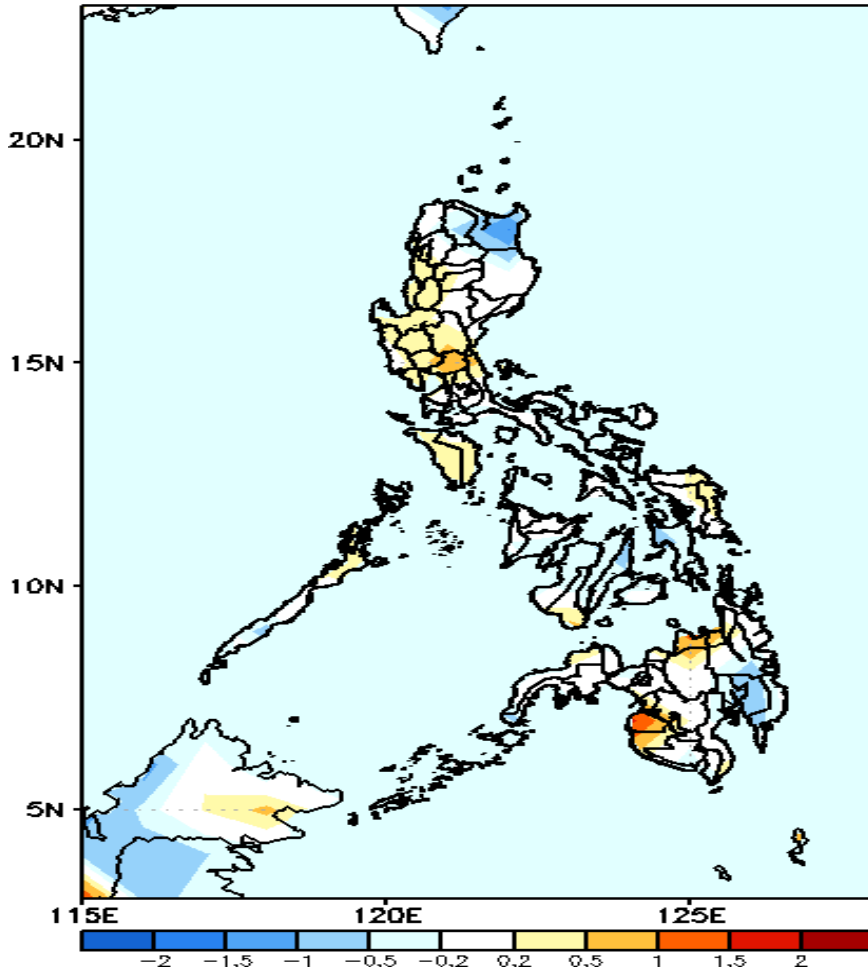
GEFS Week-2 Exceedance Prob. > 200mm
Valid: 20210826 - 20210901



Less probability of rainfall to exceed 200mm in most parts of the country is expected during the forecast period.

GEFS Week-1 & 2 Forecasts: T2m Anomaly

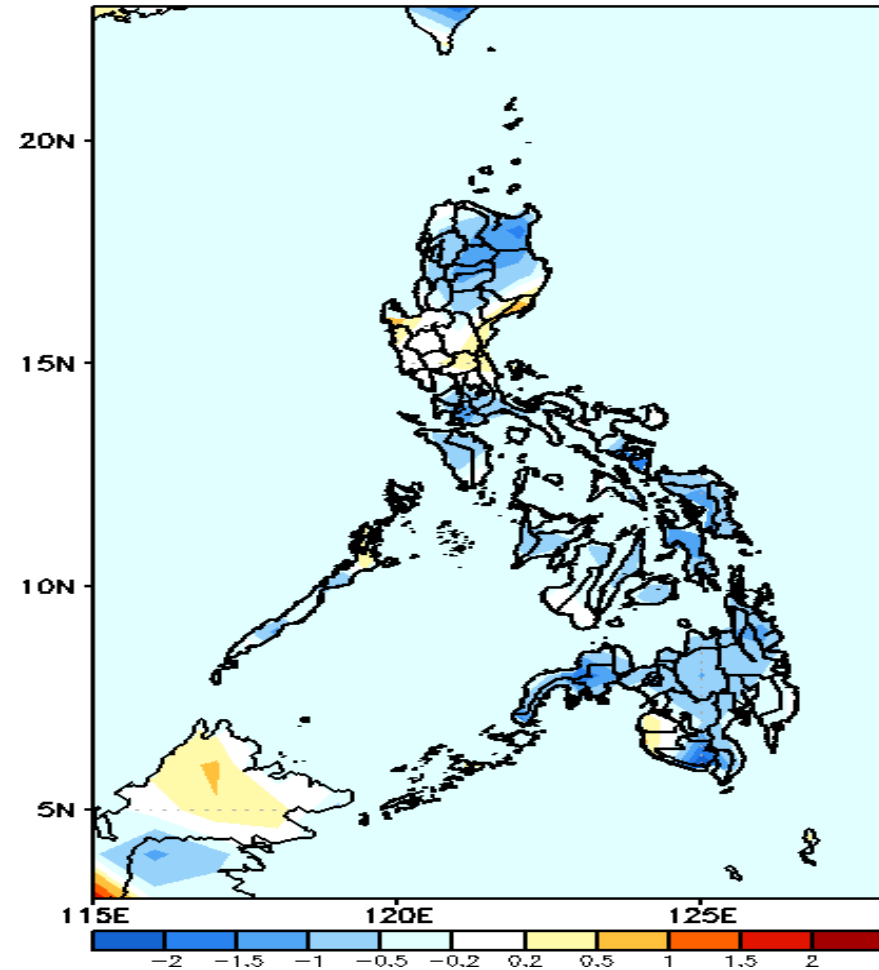
GEFS Week-1 T2m Anomaly
Valid: 20210819 - 20210825



2m Temperature Week 1: Aug 19-25, 2021

Average to slightly warmer average surface air temperature will likely experience in most parts of the country is expected while cooler than average temperature in Cagayan and Davao Region during the forecast period.

GEFS Week-2 T2m Anomaly
Valid: 20210826 - 20210901



2m Temperature Week 2: Aug 26-Sep 01, 2021

Slightly cooler to cooler than average surface air temperature will likely experience in most parts of the country except in Central Luzon where average surface temperature is expected during the forecast period.